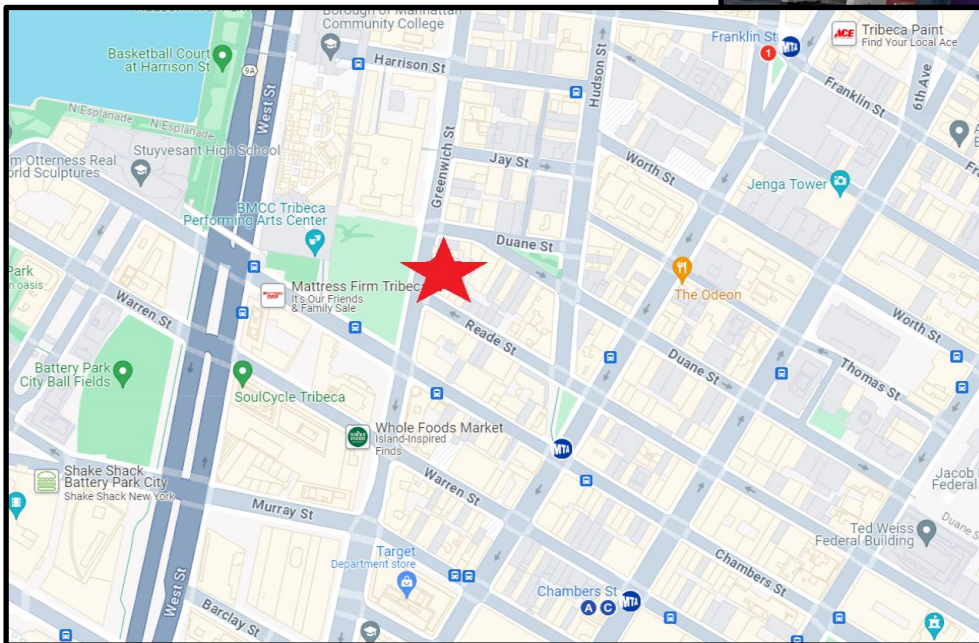


TriBeCa Corner Store

315 Greenwich Street

NE Corner of Reade Street

<i>Neighborhood</i>	TriBeCa
<i>Approximate Size</i>	1,200 sf ground floor 400 sf storage basement
<i>Approximate Frontage</i>	20 feet
<i>Rent</i>	\$17,000 per month
<i>Features</i>	High ceilings Delivered as White Box Ideal for Coffee, Fashion, Etc
<i>Possession</i>	Immediate



For More Information Contact Exclusive Agent:

Rafe B. Evans • rafeevans@walkermalloy.com • 917.701.4059

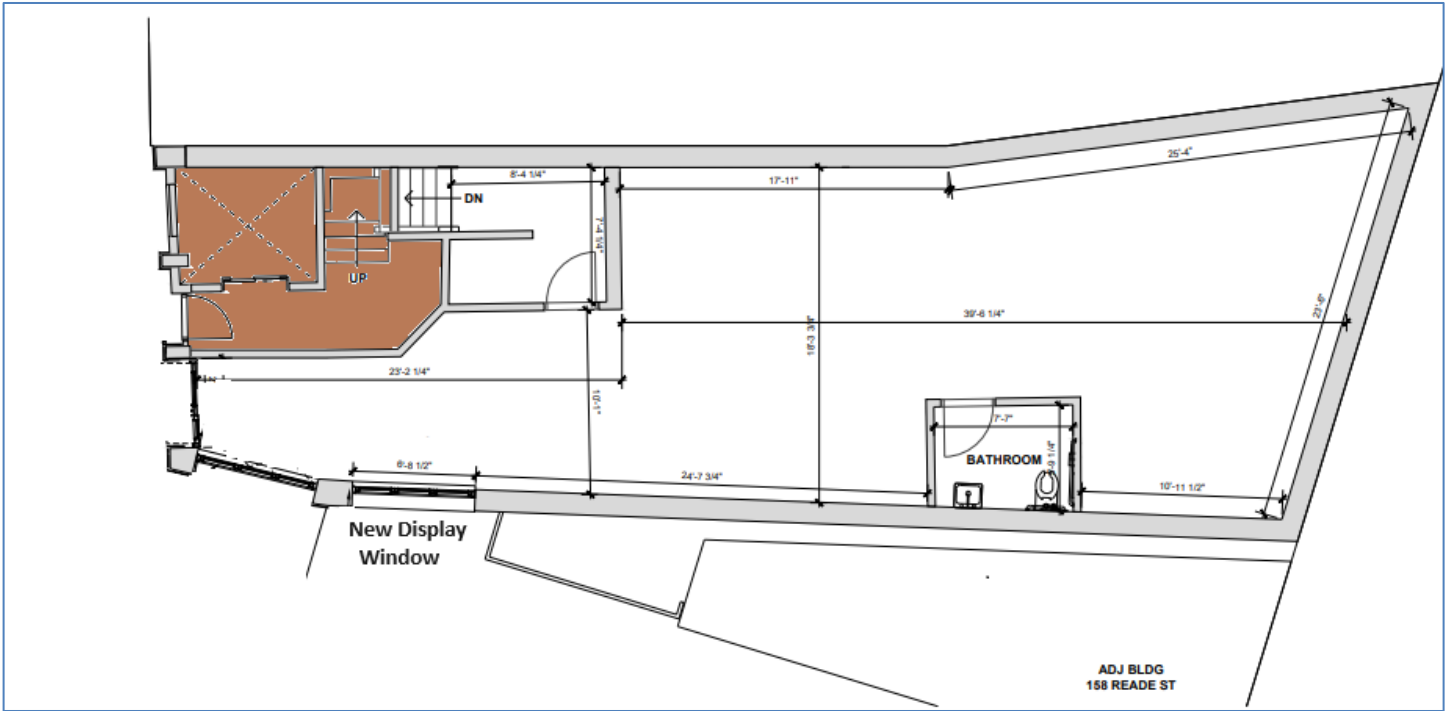
WalkerMalloy

157 Columbus Avenue • New York NY 10023

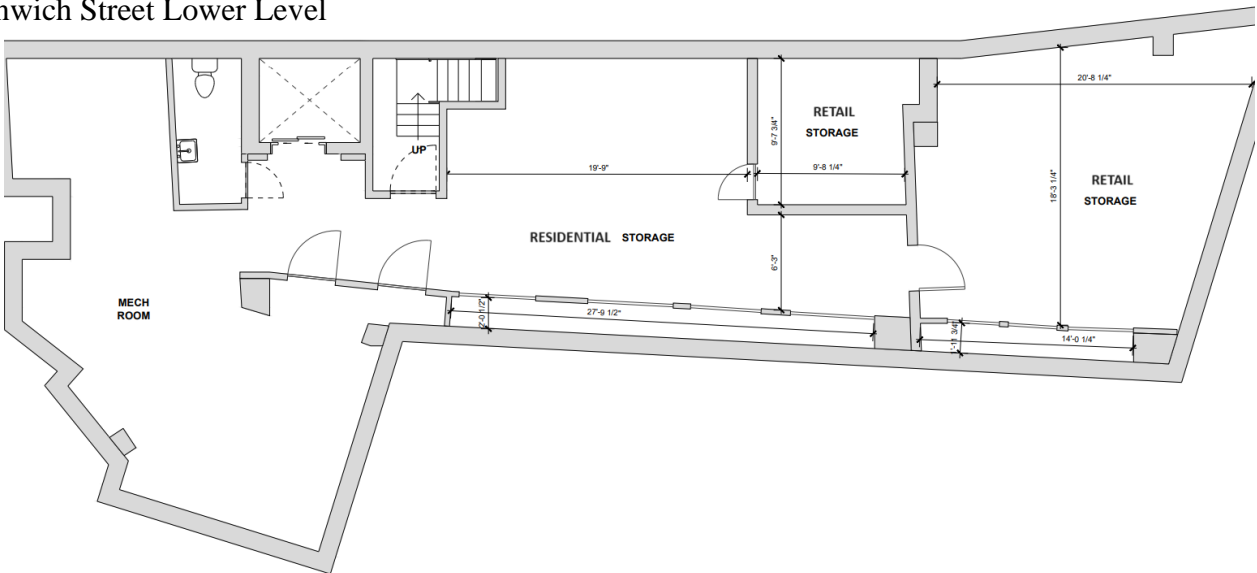
walkermalloy.com

ALL INFORMATION IS SUBJECT TO, ERRORS, OMISSIONS, CHANGE, OR WITHDRAWAL WITHOUT NOTICE. Dimensions are approximate. One half of a commission is payable in accordance with our rate schedule to procuring broker executing our brokerage agreement, provided that a lease is fully consummated as described in said agreement. Our commission rate schedule is available upon request.

315 Greenwich Street Ground Floor



315 Greenwich Street Lower Level



For More Information Contact Exclusive Agent:
Rafe B. Evans • rafeevans@walkermalloy.com • 917.701.4059

WalkerMalloy

157 Columbus Avenue • New York NY 10023

walkermalloy.com