
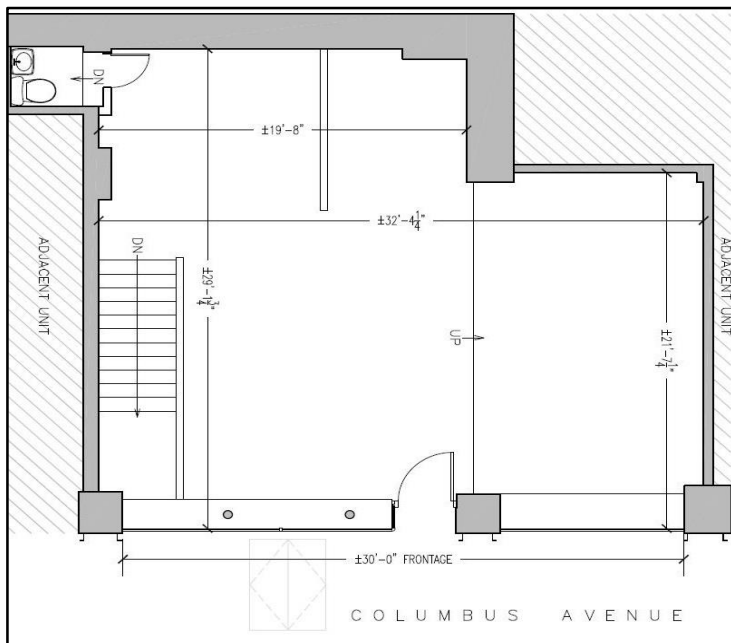


UPPER WEST SIDE

552 Columbus Ave.

Between 86th & 87th

Neighborhood	Upper West Side
Approximate Size	890 SF Ground + 850 SF (Selling) Basement
Approximate Frontage	30 Feet along Columbus Ave.
Ideal Uses	Child care, Fitness, Boutique, non-cooking food.
Currently	Artistic Design
Rent	\$15,000 Monthly
Features	Great Visibility, High Ceilings, Nice Interior Finishes.
Possession	Arranged
2010 Census	Average Household Income: \$186,532
Neighbors	Starbucks, Chase, TD Bank, Momofuku Milk Bar.
Transportation	86th Street: 



For More Information Contact Exclusive Agents:

Rafe B. Evans • rafeevans@walkermalloy.com • 212.712.6186 • 917.701.4059

Eric Fisher • efisher@walkermalloy.com • 212.712.6199 • 914.393.5564

WalkerMalloy

157 Columbus Avenue • New York NY 10023

walkermalloy.com

ALL INFORMATION IS SUBJECT TO, ERRORS, OMISSIONS, CHANGE, OR WITHDRAWAL WITHOUT NOTICE. Dimensions are approximate. One half of a commission is payable in accordance with our rate schedule to procuring broker executing our brokerage agreement, provided that a lease is fully consummated as described in said agreement. Our commission rate schedule is available upon request.