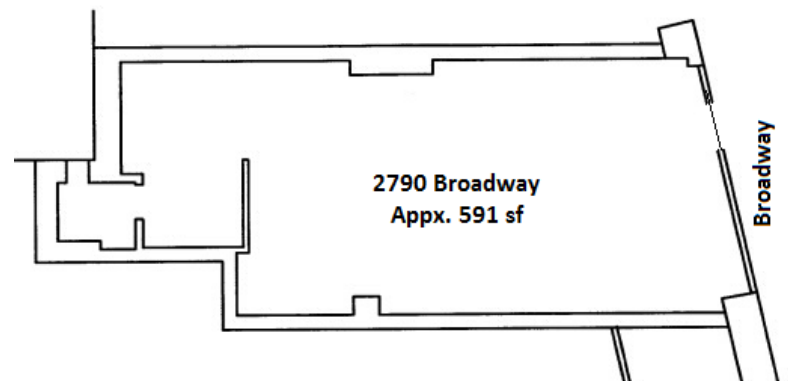


COLUMBIA UNIVERSITY AREA

2790 Broadway Between 107th & 108th Street

<i>Neighborhood</i>	Upper West Side
<i>Approximate Size</i>	591 sf + full storage basement
<i>Approximate Frontage</i>	14 feet
<i>OK Uses</i>	No cooking, please
<i>Formerly</i>	Columbia Copy Shop
<i>Rent</i>	\$9,600 / month
<i>Features</i>	Strong seven day traffic High ceilings, column free Immediate
<i>Possession</i>	Immediate
<i>2010 Census</i>	Median Household Income: \$80,809 Mean Household Income: \$129,415
<i>Neighbors</i>	Garden of Eden, Bank of America, Sleepys, Radio Shack
<i>Transportation</i>	1



For More Information Contact Exclusive Agents:

Rafe B. Evans • rafeevans@walkermalloy.com • 212.712.6186 • 917.701.4059

WalkerMalloy

101 West 70th Street • New York NY 10023 walkermalloy.com