

ANASTASIA S. MEYDING  
Director

## AVAILABLE

### Space Facts

<i>Space Address</i>	349 Lenox Avenue & 128 <sup>th</sup> Street
<i>Neighborhood</i>	Harlem
<i>Approximate Size</i>	3,000 square feet Divisible
<i>Approximate Frontage</i>	74 feet
<i>OK Uses</i>	All uses considered
<i>Rent</i>	\$75 per square foot

### Note

- Great Harlem location
- Steps from the Apollo Theatre, Sylvia's, Red Rooster Starbucks, Marshall's
- Good pedestrian foot traffic
- Quality storefront in attractive building

### Contact

Anastasia Meyding

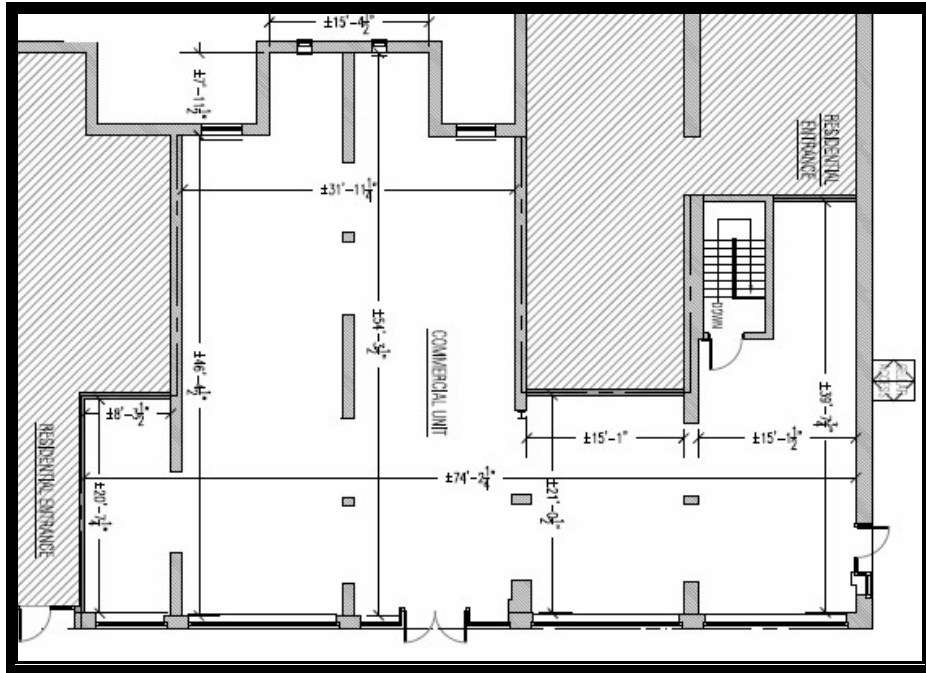
212-712-6183



ALL INFORMATION IS SUBJECT TO, ERRORS, OMISSIONS, CHANGE, OR WITHDRAWAL WITHOUT NOTICE. Dimensions are approximate. One half of a commission is payable in accordance with our rate schedule to procuring broker executing our brokerage agreement, provided that a lease is fully consummated as described in said agreement. Our commission rate schedule is available upon request.

101 West 70<sup>th</sup> Street • New York, NY 10023 • 212 712.6186  
Cell 917 701.4059 • Fax 212 724-6386 • [ameyding@walkermalloy.com](mailto:ameyding@walkermalloy.com)

**Ground Floor**



**Basement Space**

