

HARLEM SPACE AVAILABLE

Space Facts

<i>Space Address</i>	2080 Frederick Douglass Blvd (Eighth Avenue) between 112 th & 113 th Street
<i>Neighborhood</i>	Harlem
<i>Approximate Size</i>	2,070 sf + 957 sf basement + 680 sf back yard for dining
<i>Approximate Frontage</i>	29 feet
<i>OK Uses</i>	All Uses Considered
<i>Possession</i>	January 2011
<i>Rent</i>	\$12,937 per month

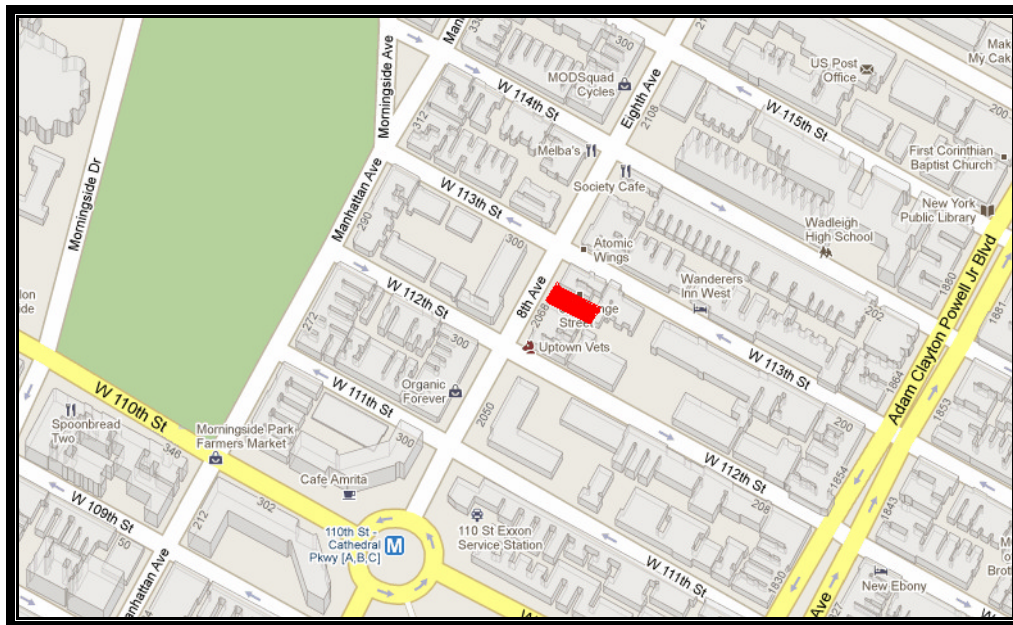
Note

Vented space on Harlem's most vibrant nightlife strip
Very high ceilings, dedicated elevator, rear yard outdoor dining.

Contact

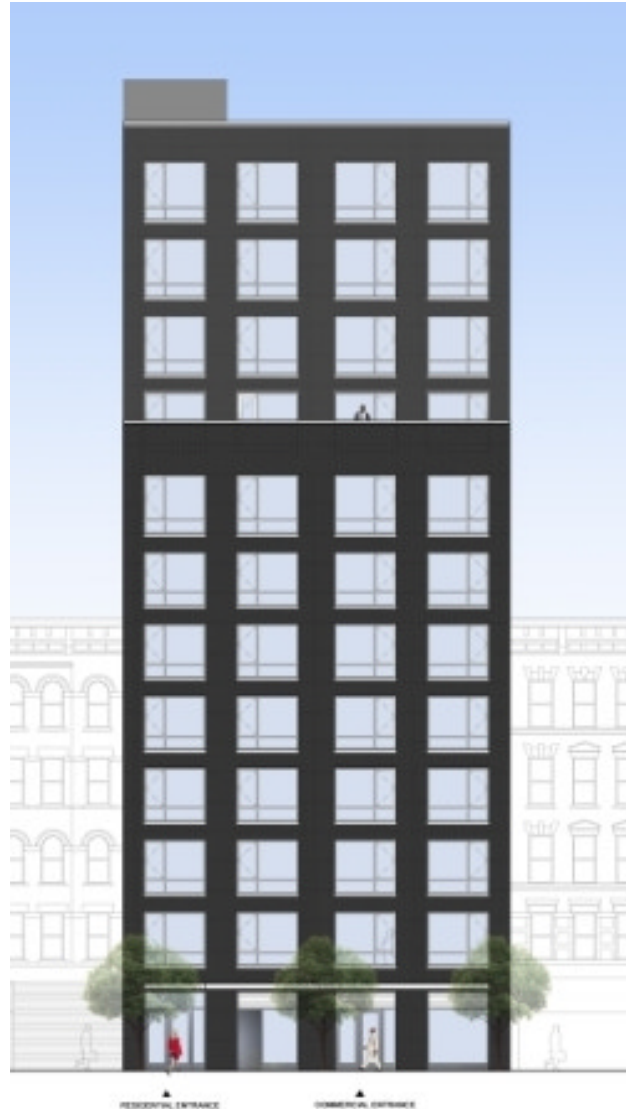
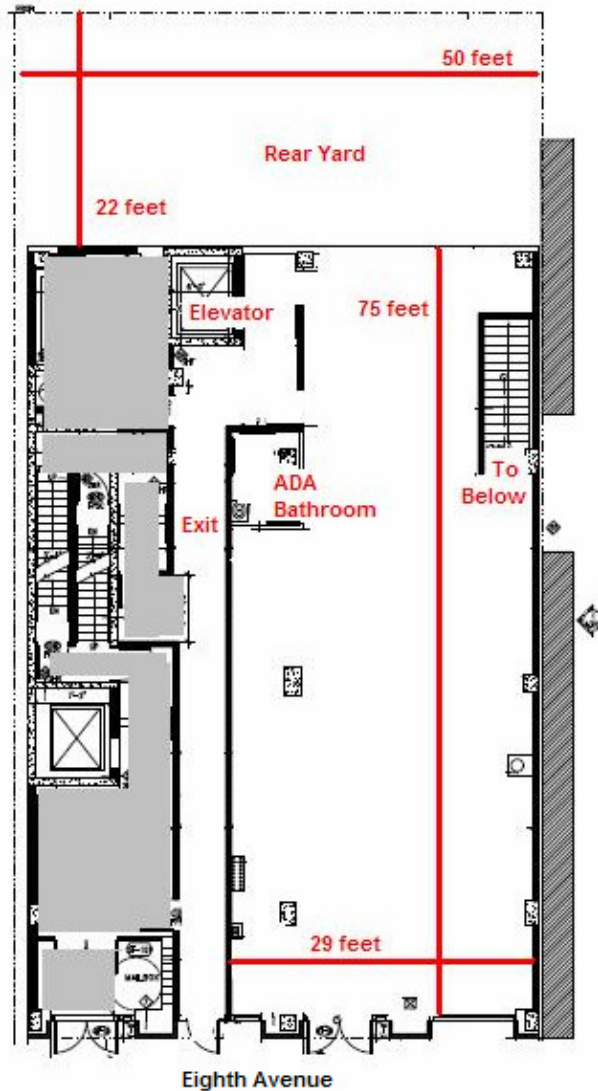
Anastasia Meyding

212-712-6183



ALL INFORMATION IS SUBJECT TO, ERRORS, OMISSIONS, CHANGE, OR WITHDRAWAL WITHOUT NOTICE. Dimensions are approximate. One half of a commission is payable in accordance with our rate schedule to procuring broker executing our brokerage agreement, provided that a lease is fully consummated as described in said agreement. Our commission rate schedule is available upon request.

HARLEM SPACE AVAILABLE



ALL INFORMATION IS SUBJECT TO, ERRORS, OMISSIONS, CHANGE, OR WITHDRAWAL WITHOUT NOTICE. Dimensions are approximate. One half of a commission is payable in accordance with our rate schedule to procuring broker executing our brokerage agreement, provided that a lease is fully consummated as described in said agreement. Our commission rate schedule is available upon request.

101 West 70th Street • New York, NY 10023 • 212 712.6183
Cell 347 886.4338 • ameyding@walkermalloy.com