

RAFE B. EVANS
Vice President

MEDICAL/RETAIL SPACE AVAILABLE

Space Facts

<i>Address</i>	1825 Madison Avenue, between 118 th and 119 th Streets
<i>Neighborhood</i>	South Harlem
<i>Approximate Size</i>	1,590 SF
<i>Preferred Uses</i>	Dental, Medical, Spa, Retail
<i>Formerly</i>	Manhattan Dental
<i>Rent</i>	\$40 psf

Note

- Built dental office in clean condition
- ADA compliant
- Includes 3 exam rooms, 3 offices, and 2 bathrooms

Contact

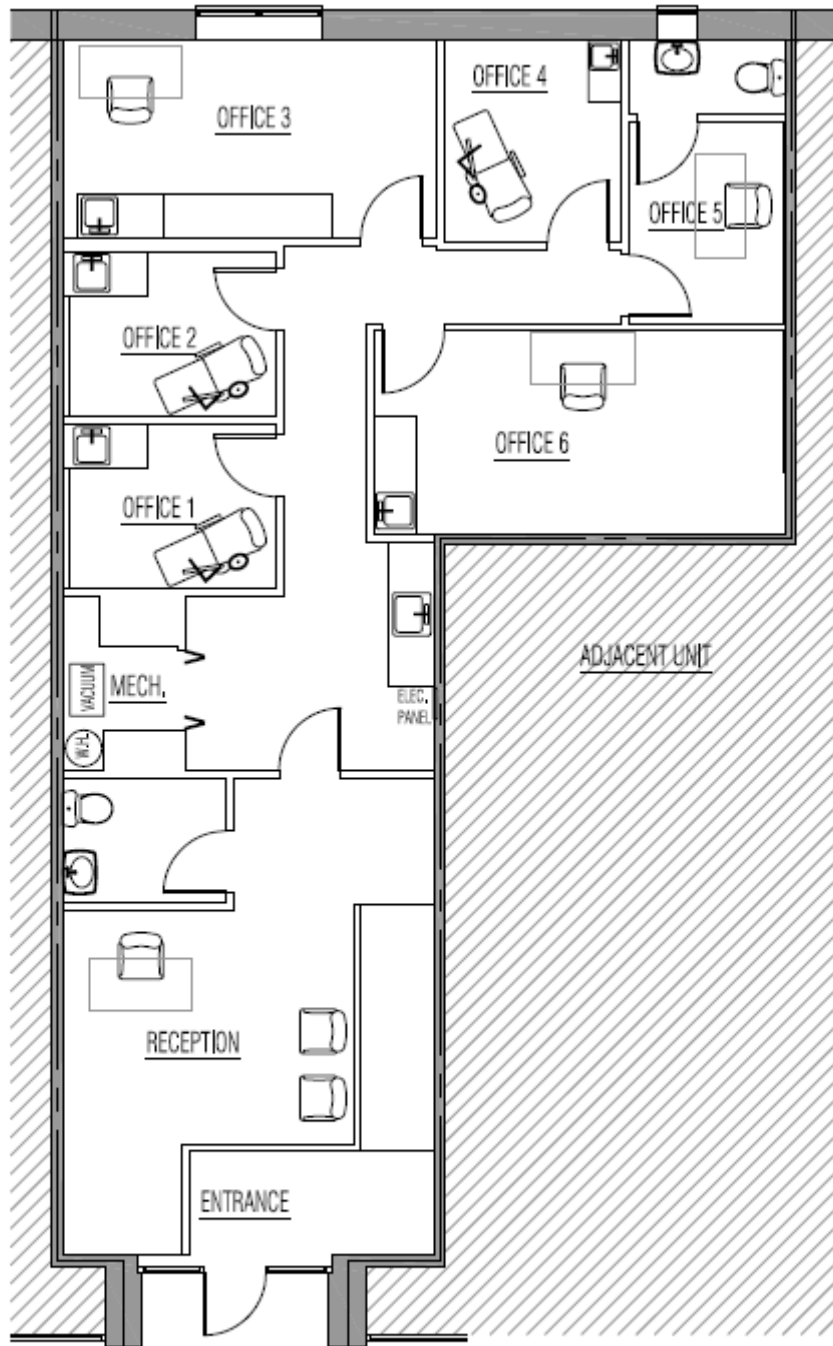
Rafe B. Evans

212-712-6186



ALL INFORMATION IS SUBJECT TO, ERRORS, OMISSIONS, CHANGE, OR WITHDRAWAL WITHOUT NOTICE. Dimensions are approximate. One half of a commission is payable in accordance with our rate schedule to procuring broker executing our brokerage agreement, provided that a lease is fully consummated as described in said agreement. Our commission rate schedule is available upon request.

101 West 70th Street • New York, NY 10023 • 212 712.6186
Cell 917 701.4059 • Fax 212 724-6386 • rafeevans@walkermalloy.com



MADISON AVENUE

