

# Chelsea Retail

## 219 West 14<sup>th</sup> Street

Between 7th and 8th Avenue

**Area** Chelsea

**Size** 846 sf ground floor  
224 sf lower (finished)  
1,070 sf total

**Possession** March 2016


**Use** All Non-Cooking Uses Considered

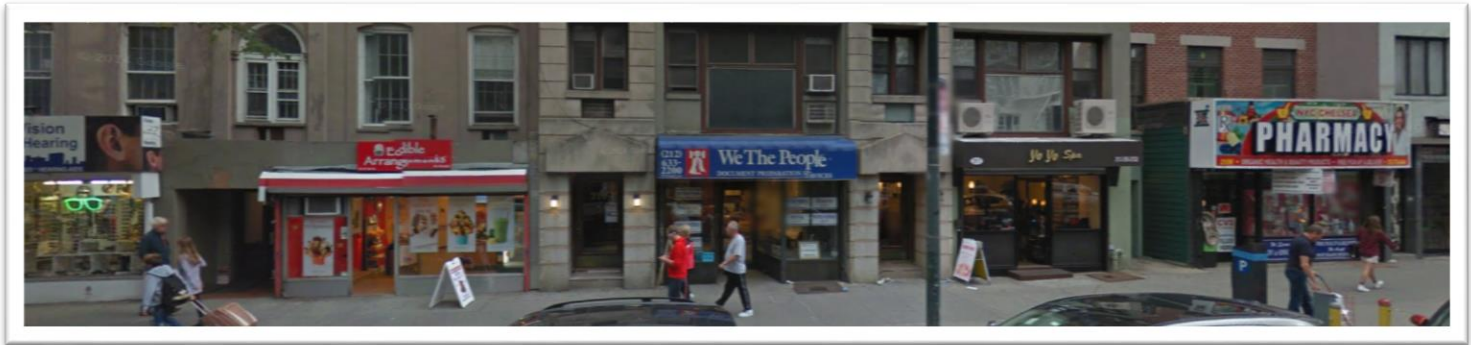
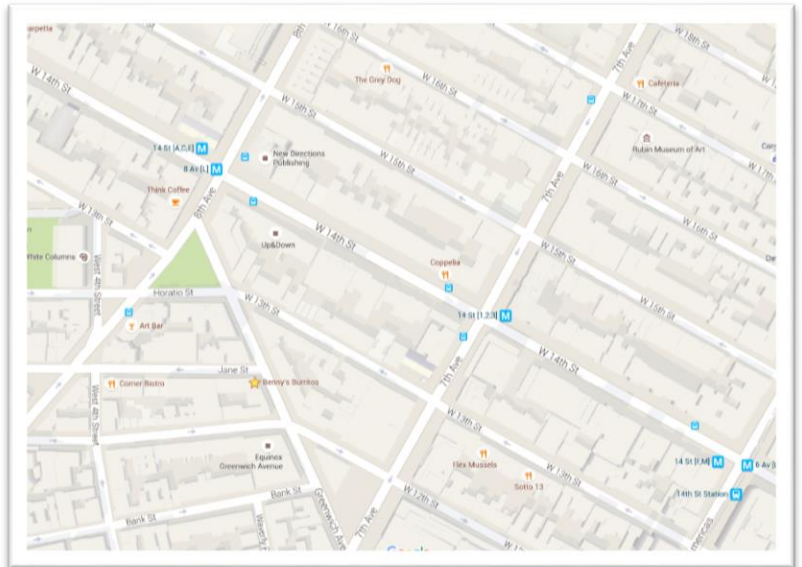
**Frontage** ~16 Feet

**Rent** \$9,000 monthly

**Features** Good Signage  
Very clean condition  
Built as walk-in law office

**Nearby** Union Square, Meatpacking District

**Transportation** 14<sup>th</sup> St: 



For More Information Contact Exclusive Agent:

Rafe Evans, SVP • [rafeevans@walkermalloy.com](mailto:rafeevans@walkermalloy.com) • office 212.712.6186 • cell 917.701.4059

# WalkerMalloy

157 Columbus Avenue • New York NY 10023

[walkermalloy.com](http://walkermalloy.com)

ALL INFORMATION IS SUBJECT TO, ERRORS, OMISSIONS, CHANGE, OR WITHDRAWAL WITHOUT NOTICE. Dimensions are approximate. One half of a commission is payable in accordance with our rate schedule to procuring broker executing our brokerage agreement, provided that a lease is fully consummated as described in said agreement. Our commission rate schedule is available upon request.