

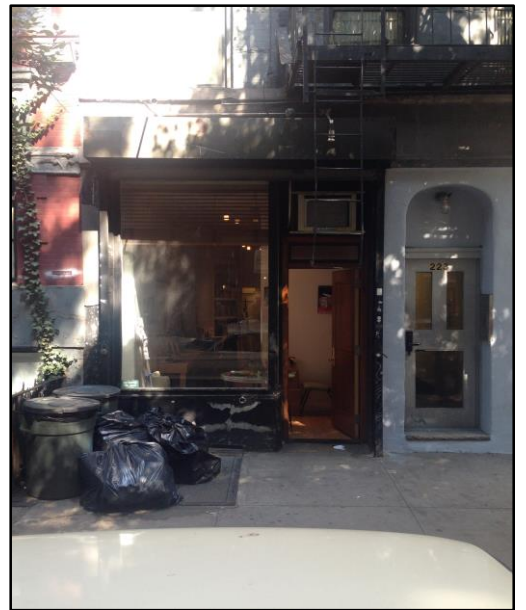
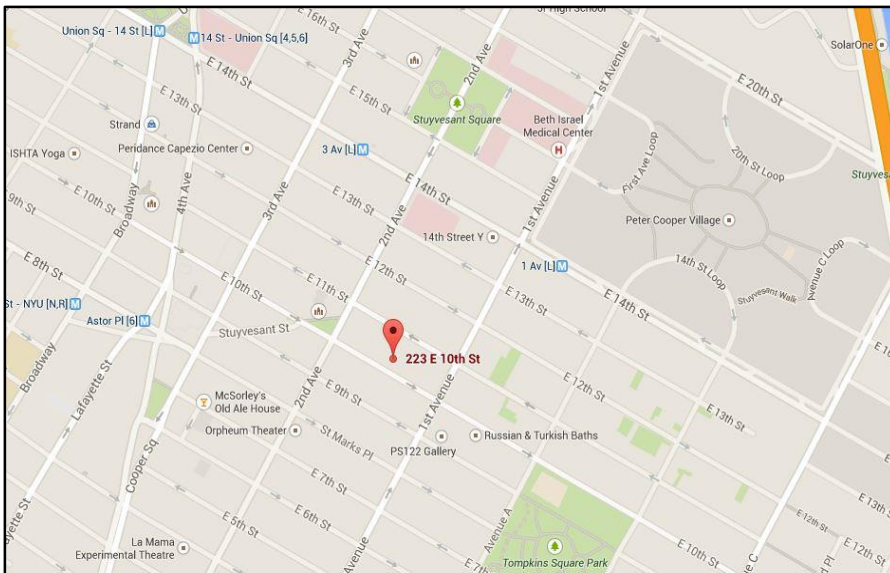
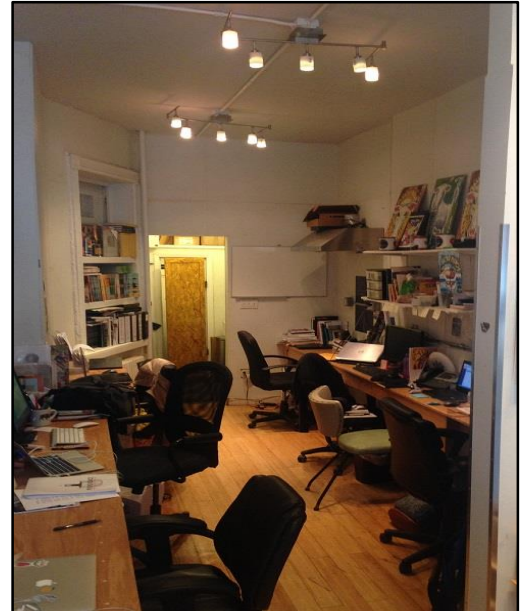


# East Village Retail

## 223 E 10<sup>th</sup> St.

Between 1<sup>st</sup> & 2<sup>nd</sup> Avenue

<b>Neighborhood</b>	East Village
<b>Approximate Size</b>	400 sf + storage basement
<b>Approximate Frontage</b>	9 Feet
<b>Ideal Uses</b>	All uses considered
<b>Currently</b>	Vacant
<b>Rent</b>	\$4,500 Monthly
<b>Features</b>	Nicely finished for office or retail uses.
<b>Possession</b>	Immediate
<b>Neighbors</b>	Momofuko Ko, Chase, NYU
<b>Transportation</b>	Astor Pl:  14 <sup>th</sup> St: 



For More Information Contact Exclusive Agents:

Rafe B. Evans • [rafeevans@walkermalloy.com](mailto:rafeevans@walkermalloy.com) • 212.712.6186 • 917.701.4059

Eric Fisher • [efisher@walkermalloy.com](mailto:efisher@walkermalloy.com) • 212.712.6199 • 914.393.5564

# WalkerMalloy

157 Columbus Avenue • New York NY 10023

[walkermalloy.com](http://walkermalloy.com)

ALL INFORMATION IS SUBJECT TO, ERRORS, OMISSIONS, CHANGE, OR WITHDRAWAL WITHOUT NOTICE. Dimensions are approximate. One half of a commission is payable in accordance with our rate schedule to procuring broker executing our brokerage agreement, provided that a lease is fully consummated as described in said agreement. Our commission rate schedule is available upon request.