

# Stuyvesant Town Retail

## 346 E 21<sup>st</sup> St.

Steps from the SW Corner at 1<sup>st</sup> Ave

<i>Neighborhood</i>	Stuyvesant Town
<i>Approximate Size</i>	1,510 sf Ground
	Divisions Considered
<i>Approximate Frontage</i>	46 Feet along 21 <sup>st</sup> St.
<i>Uses</i>	All uses considered
<i>Rent</i>	\$18,875/Month
<i>Features</i>	Partially Fixtured Restaurant Potential for a new Storefront
<i>Neighborhood</i>	Beth Israel & NYU Medical Centers 25,000+ residents within Stuy Town
<i>Possession</i>	Arranged

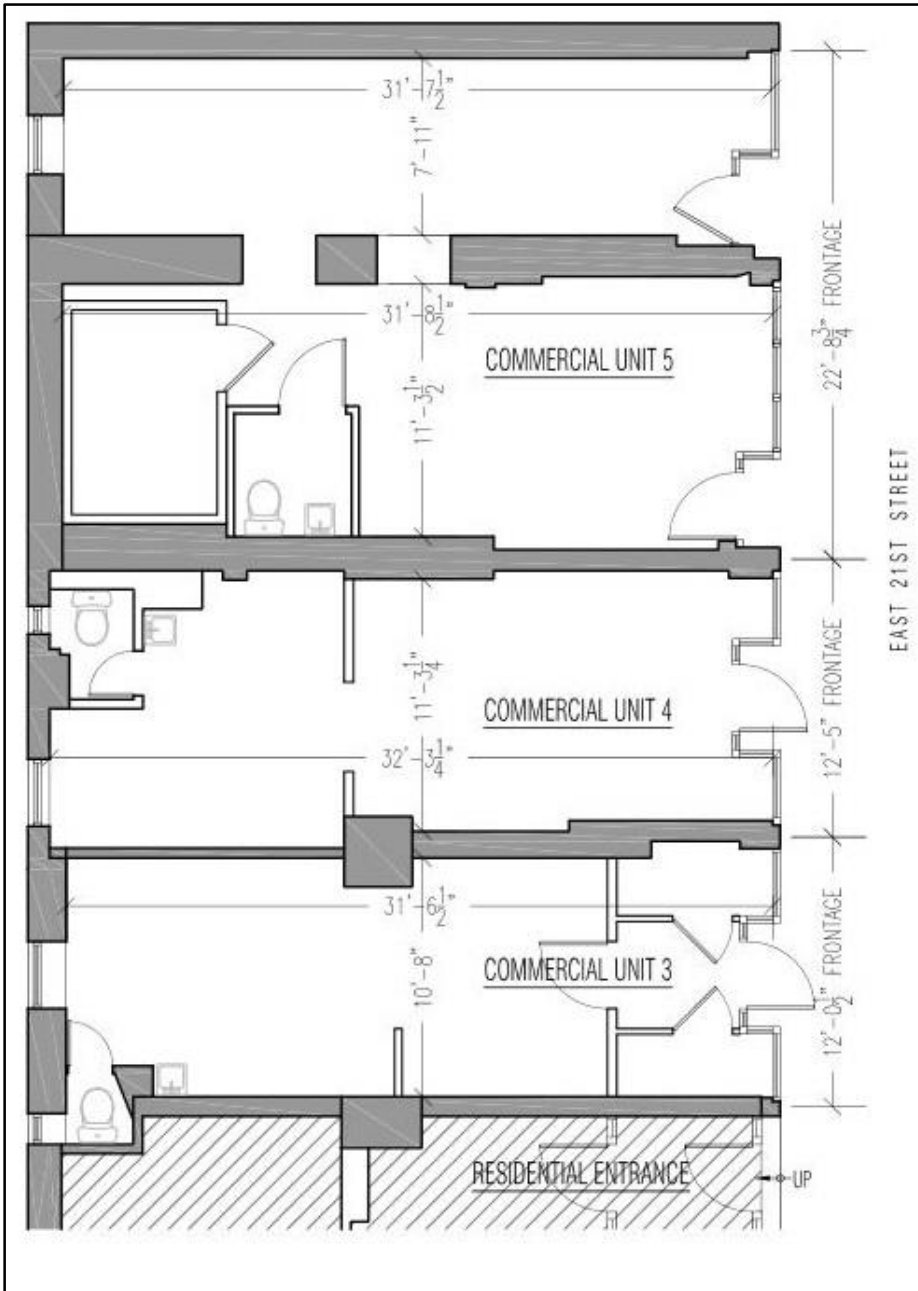


For More Information Contact Exclusive Agents:

Eric Fisher • [efisher@walkermalloy.com](mailto:efisher@walkermalloy.com) • 212.712.6199 • 914.393.5564  
Rafe Evans • [rafeevans@walkermalloy.com](mailto:rafeevans@walkermalloy.com) • 212.712.6186 • 917.701.4059

## Floor Plan – Current, with potential divisions

## Neighbors



Bank of America



Beth Israel



For More Information Contact Exclusive Agents:

Eric Fisher • [efisher@walkermalloy.com](mailto:efisher@walkermalloy.com) • 212.712.6199 • 914.393.5564  
Rafe Evans • [rafeevans@walkermalloy.com](mailto:rafeevans@walkermalloy.com) • 212.712.6186 • 917.701.4059

# WalkerMalloy

157 Columbus Avenue • New York NY 10023

[walkermalloy.com](http://walkermalloy.com)

ALL INFORMATION IS SUBJECT TO, ERRORS, OMISSIONS, CHANGE, OR WITHDRAWAL WITHOUT NOTICE. Dimensions are approximate. One half of a commission is payable in accordance with our rate schedule to procuring broker executing our brokerage agreement, provided that a lease is fully consummated as described in said agreement. Our commission rate schedule is available upon request.