



WalkerMalloy

## AVAILABLE

### Space Facts

<i>Space Address</i>	424 West 33rd Street (bet 9th & 10th Ave)
<i>Neighborhood</i>	Midtown West
<i>Approximate Size</i>	7,000 SF + 2,700 SF basement
<i>Approximate Frontage</i>	37 feet
<i>OK Uses</i>	All Uses Considered
<i>Rent</i>	\$37.00 / SF
<i>Available</i>	Immediately

### Note

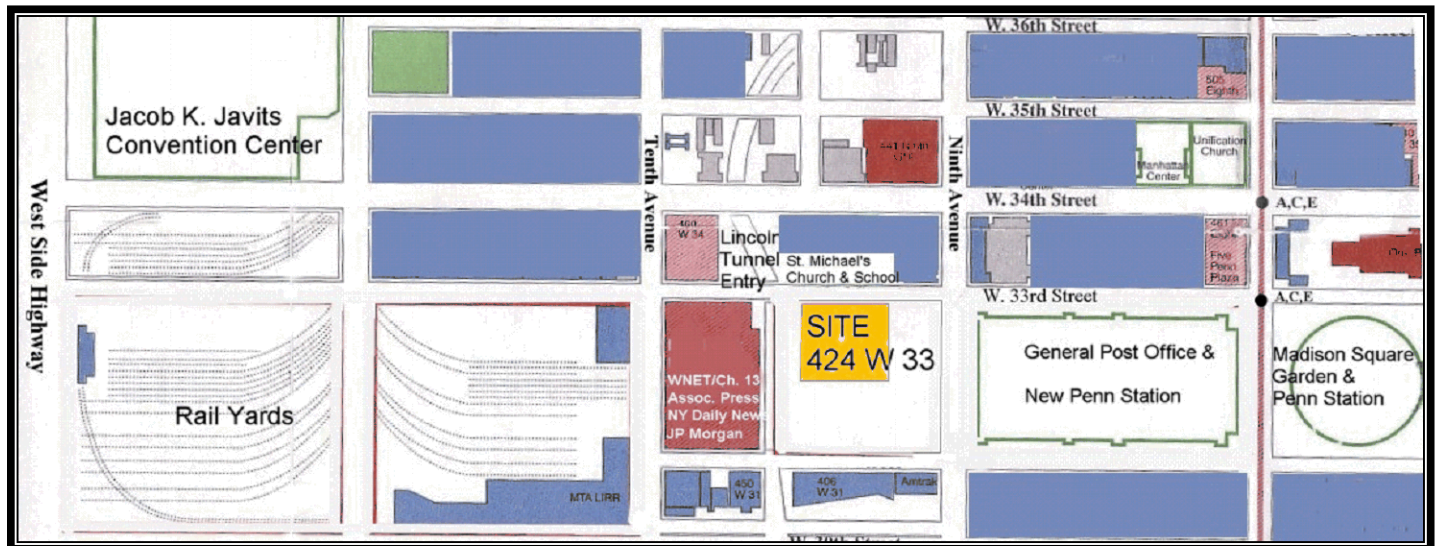
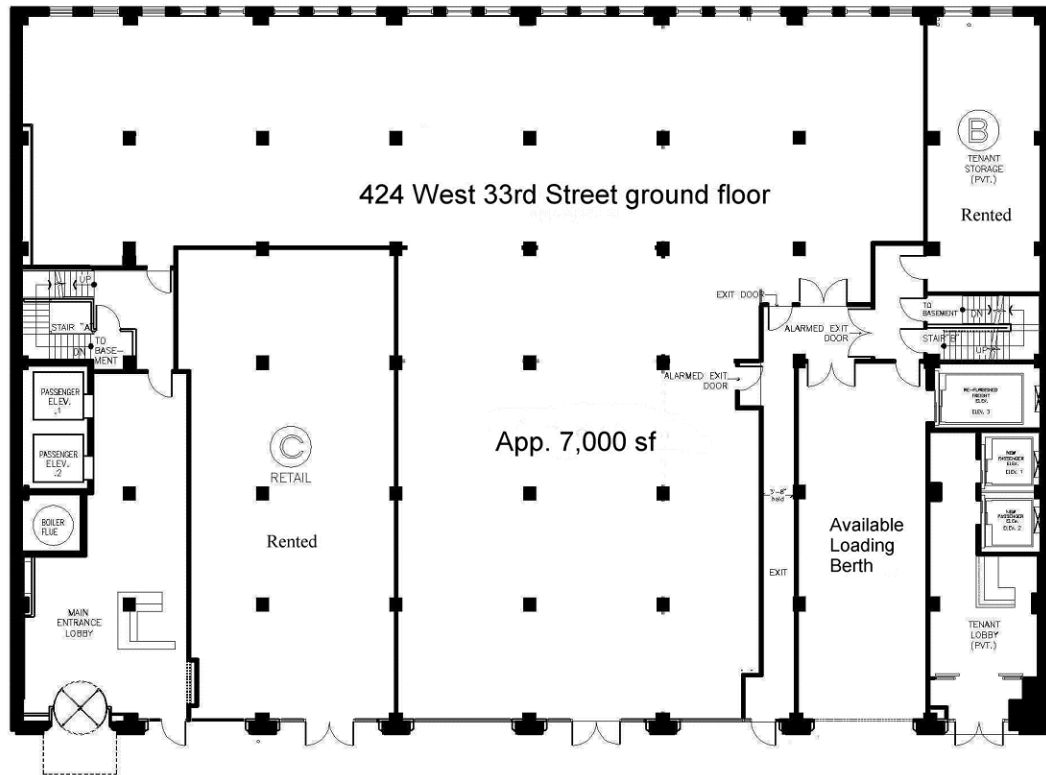
- 14' 9" ceilings
- New utilities
- Rear windows with natural light
- Adjacent to available interior loading dock
- Can be tied to 15,000 SF second floor
- Near: Penn Station, Madison Sq. Garden, Lincoln Tunnel, Jacob Javits
- Near: 1,2,3,9,A,C,E, Amtrak, LIRR & NJ Transit lines
- 192,000 workers within ½ mile
- Suitable for gym, school, showroom, retail, etc.
- Logical divisions considered

Contact:

Rafe B. Evans, V.P.  
Walker, Malloy & Company, Inc.  
212-712-6186  
[rafeevans@walkermalloy.com](mailto:rafeevans@walkermalloy.com)

Nick Poshkus, Managing Director  
Coldwell Banker Commercial  
212-877-6224  
[nposhkus@coldwellbanker.com](mailto:nposhkus@coldwellbanker.com)

# 424 West 33<sup>RD</sup>



424 West 33<sup>RD</sup>

