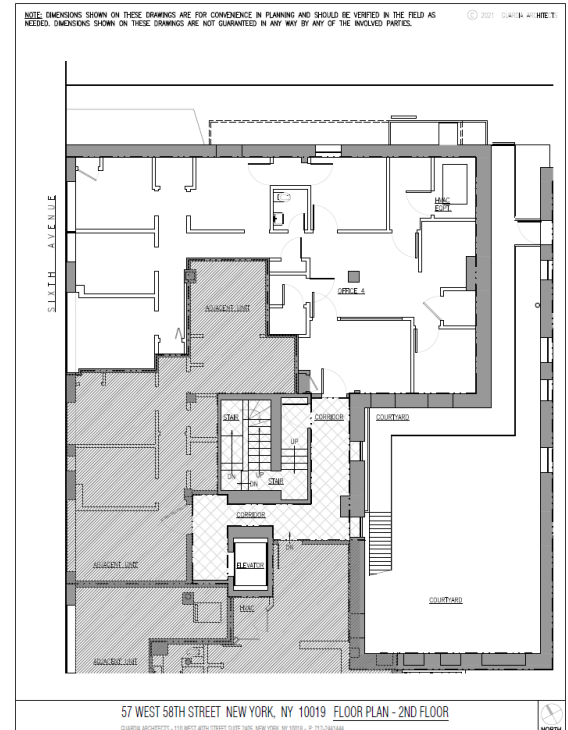
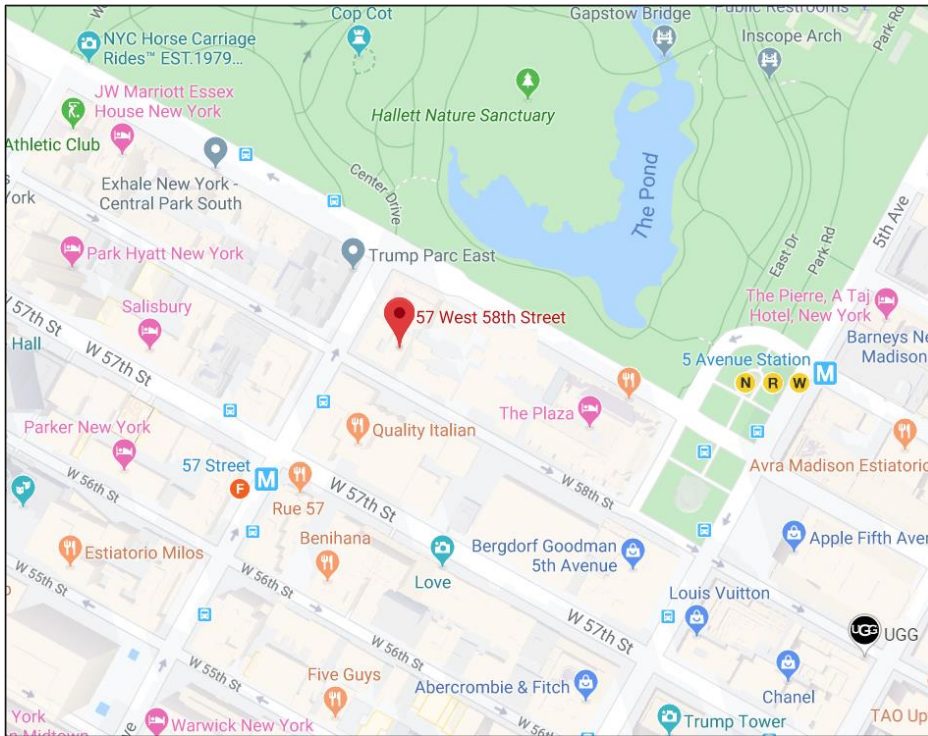


Midtown Office/Medical

57 W 58th St

NE Corner at 6th Avenue

| | |
|-------------------------|---|
| <i>Neighborhood</i> | Midtown |
| <i>Approximate Size</i> | 1,578 sf |
| <i>Ideal Uses</i> | Office, Medical, Spa |
| <i>Formerly</i> | Dental office |
| <i>Rent</i> | \$65 psf \$50 psf (\$6,500 monthly) |
| <i>Features</i> | Central location Reception, 3 treatment rooms, 2 offices, lab Visible from Avenue of the Americas |
| <i>Possession</i> | Immediate |
| <i>Neighbors</i> | Central Park, Carnegie Hall, Billionaire's Row |
| <i>Transportation</i> | 5th Ave: N Q R 57th St: F |



For More Information Contact Exclusive Agent:

Rafe Evans • rafeevans@walkermalloy.com • office 212.712.6187 • cell 917.701.4059

WalkerMalloy

157 Columbus Avenue • New York NY 10023

walkermalloy.com

ALL INFORMATION IS SUBJECT TO, ERRORS, OMISSIONS, CHANGE, OR WITHDRAWAL WITHOUT NOTICE. Dimensions are approximate. One half of a commission is payable in accordance with our rate schedule to procuring broker executing our brokerage agreement, provided that a lease is fully consummated as described in said agreement. Our commission rate schedule is available upon request.