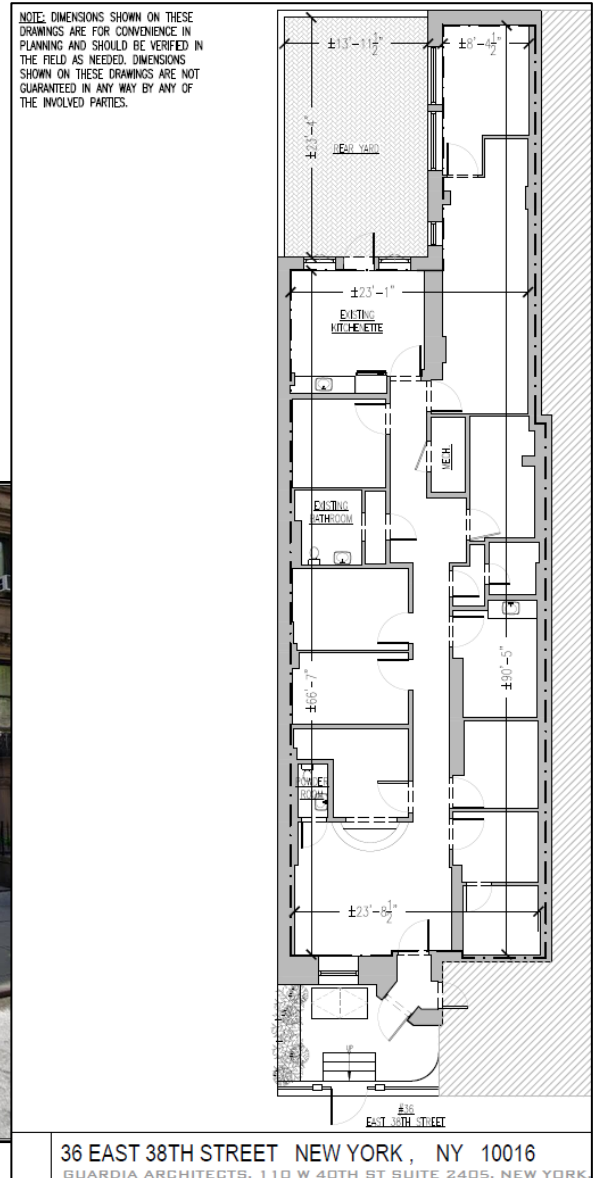


Midtown Office

36 East 38th Street

Between Park & Madison Avenues

<i>Neighborhood</i>	Midtown East
<i>Approximate Size</i>	1852 sf
<i>Rooms</i>	12 + kitchenette and bathrooms
<i>Ideal Uses</i>	Office, Medical, Educational Or Not-For-Profit Etc
<i>Currently</i>	Vacant and ready for occupancy
<i>Rent</i>	\$7,700 monthly (\$50 psf) REDUCED
<i>Features</i>	Outstanding Central Location Direct Street Entrance
<i>Nearby</i>	Morgan Library, Bryant Park, Empire State Building, Hotels, Embassies



For More Information Contact Exclusive Agent:

Rafe Evans • rafeevans@walkermalloy.com • office 212.712.6186 • cell 917.701.4059

WalkerMalloy

157 Columbus Avenue • New York NY 10023

walkermalloy.com

ALL INFORMATION IS SUBJECT TO, ERRORS, OMISSIONS, CHANGE, OR WITHDRAWAL WITHOUT NOTICE. Dimensions are approximate. One half of a commission is payable in accordance with our rate schedule to procuring broker executing our brokerage agreement, provided that a lease is fully consummated as described in said agreement. Our commission rate schedule is available upon request.

36 East 38th Street: 1,852 sf Office Space

