


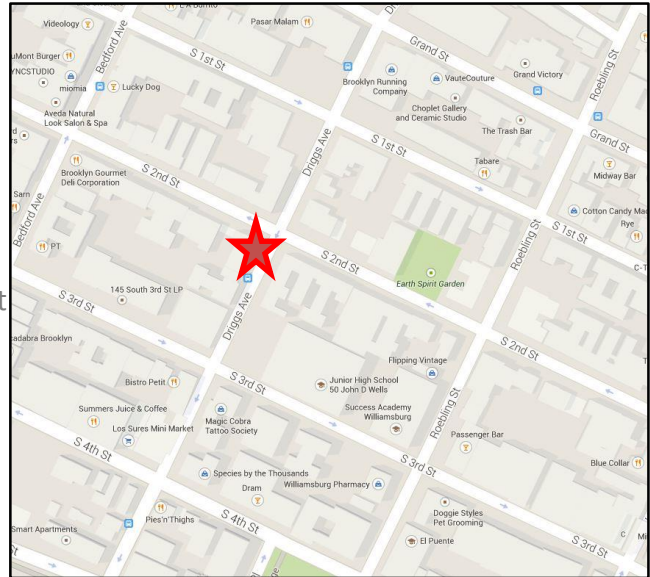


S. Williamsburg Restaurant

740 Driggs Ave.

SW Corner at S. 2nd

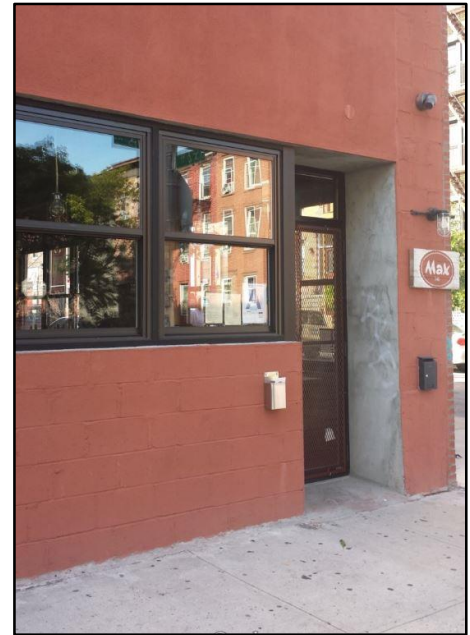
Neighborhood	South Williamsburg
Approximate Size	900 SF Ground + Full Basement
Approximate Frontage	~50 Feet of wraparound
Capacity	~40 Seats (Bar Included)
Rent	\$3,183/Month
Features	Turn-Key Restaurant All new Mechanicals & Equipment 8 Years remaining on Lease
Key Money	\$295,000
Neighbors	Pies n' Thighs, Peter Luger, Traif
Possession	Arranged
Transportation	Bedford St:  Marcy Ave:  



For More Information Contact Exclusive Agent:

Eric Fisher • efisher@walkermalloy.com • 212.712.6199 • 914.393.5564

Interior & Exterior Shots



For More Information Contact Exclusive Agent:

Eric Fisher • efisher@walkermalloy.com • 212.712.6199 • 914.393.5564

WalkerMalloy

157 Columbus Avenue • New York NY 10023

walkermalloy.com